



Halsey Taylor[®]
Satisfying Thirsts Since 1912

**Non-Filtered Wall Mount Water Cooler Models
HAC8FS-BL-Q* and HACFS-DBL L/R***

**Please see table below for entire sku*

**MODELS: HAC8FS-BL-Q* (Refrigerated Model)
HACFS-DBL L/R* (Non-Refrigerated Model)**

Bi-Level Barrier-Free HAC Cooler

Rated for Indoor Use Only



GENERAL SPECIFICATIONS

Self-contained, electric refrigerated wall-mounted cooler easily accessible to physically challenged individuals. HAC8FS-BL-Q* delivers 8 gph of 50°F drinking water at 90°F ambient air and 80°F inlet water. Model HACFS-DBL L/R* delivers non-refrigerated drinking water. Exclusive one-piece, chrome-plated two-stream Double Bubbler™ with non-removable anti-squirt feature and integral hood. Automatic stream height regulator is located inside unit to prevent tampering. Includes self-closing, light touch front and side pushbar actuation with raised letters for the visually impaired. Type 300 series stainless steel cooler top, with satin finish resists stains. Contoured to insure proper drainage. Unit shall be lead-free design which is certified to NSF/ANSI 61 and 372 and meets Federal and State low-lead requirements. The manufacturer shall certify the unit to meet the requirements of NSF/ANSI 61 and 372, UL 399 and CAN/CSA 22.2 No. 120.

STANDARD FEATURES

- Self-closing light-touch push bars on front and sides with raised letters for the visually impaired
- Extra deep basin minimizes splashing; with integral drain
- Exclusive one-piece, Chrome-plated two-stream Double Bubbler™ with non-removable anti-squirt feature and integral hood. It's integral hood insures a satisfying drink of water
- Flow regulator provides constant stream from 20 to 105 psi water pressure
- Finish options: Impact-resistant vinyl coating or stainless steel wrapper
- Rated for Indoor use

INLET STRAINER

Easily cleaned in-line strainer screen traps particles of 140 microns or larger before they enter the waterway.

WATER INLET - 3/8" O.D. Tubing. **DRAIN OUTLET** - 1-1/2" tube outlet for 1-1/2" slip joint connection. **Trap and service stop not included.**

COOLING SYSTEM

- Compressor: Hermetically-sealed, reciprocating type, single phase. Sealed-in lifetime lubrication.
- Condenser: Fan cooled, copper tube with aluminum fins. Fan motor is permanently lubricated.
- Cooling Unit: Combination tube-tank type. Self-cleansing. Continuous copper tubing with stainless steel tank. Fully insulated with EPS foam that meets UL requirements for self-extinguishing material
- Refrigerant Control: Refrigerant R134a is controlled by accurately calibrated capillary tube.
- Temperature Control: Easily accessible enclosed adjustable thermostat is factory preset. Requires no adjustment other than for altitude requirements.



Model HAC8FS-BL-Q*

Cooler panels available in Platinum Vinyl (standard) or Stainless Steel (additional cost).




CONSTRUCTION

- Stainless Steel basin with integral drain
- Galvanized structural steel cooler chassis provides structural integrity
- Cooler cabinet available as Platinum Vinyl Clad Steel or Stainless Steel (additional cost)
- Chrome-plated two-stream Double Bubbler™ with non-removable anti-squirt feature and integral hood.

WARRANTY

5 year limited warranty on the unit's refrigeration system. Electrical components and water system are warranted for 12 months from date of installation or 18 months from factory shipment, whichever date falls first.

CAPACITIES CHART

CAPACITIES CHART									
Model	Order ID	Voltage / Hertz	Chilling** Capacity	F.L. Amps	Rated Watts	Approx. Ship Wt.	ADA Compliant	UL399 and CAN/CSA 22.2 No. 120 Certified	NSF/ANSI 61 and 372 Certified
HAC8FS-BL-Q*(PV)	8740082041	115V / 60Hz	8.0 GPH	4.5	370	94 lbs.	•	•	•
HAC8FS-BL-Q*(S)	8740082083	115V / 60Hz	8.0 GPH	4.5	370	94 lbs.	•	•	•
HACFS-DBL L/R*(PV)	8740002041	—	—	—	—	71 lbs.	•	•	•
HACFS-DBL L/R*(S)	8740002083	—	—	—	—	71 lbs.	•	•	•

*Please add the color code of (PV) Platinum Vinyl or (S) Stainless Steel for the cooler wrapper for your complete sku.

**Based on 80°F inlet water & 90°F ambient air temp for 50°F chilled drinking water.

NOTE: Continued product improvement makes specification sheets subject to change without notice.



Halsey Taylor[®]

Satisfying Thirsts Since 1912

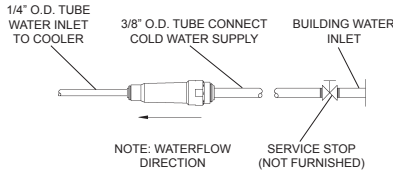
**Non-Filtered Wall Mount Water Cooler Models
HAC8FS-BL-Q* and and HACFS-DBL L/R***

Rated for Indoor Use Only

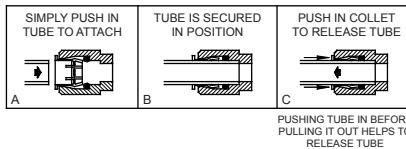
Barrier-Free HAC Cooler

(CONTINUED)

NOTE: A service stop (not included) must be installed at the water inlet line.
NOTE: P-Trap (not supplied) to be installed per local building code.



OPERATION OF QUICK CONNECT FITTINGS



OPERATING PRESSURES

Supply water 20 - 105 psi maximum, minimum 40 psi required in special circumstances when both sides of bi-level are in use simultaneously to ensure adequate stream height. Does not apply to non-refrigerated units.

MOUNTING HEIGHT

Lower unit mounting height recommended 31 7/8" (810mm) from basin to floor. May be mounted at any desired height. Check local codes.

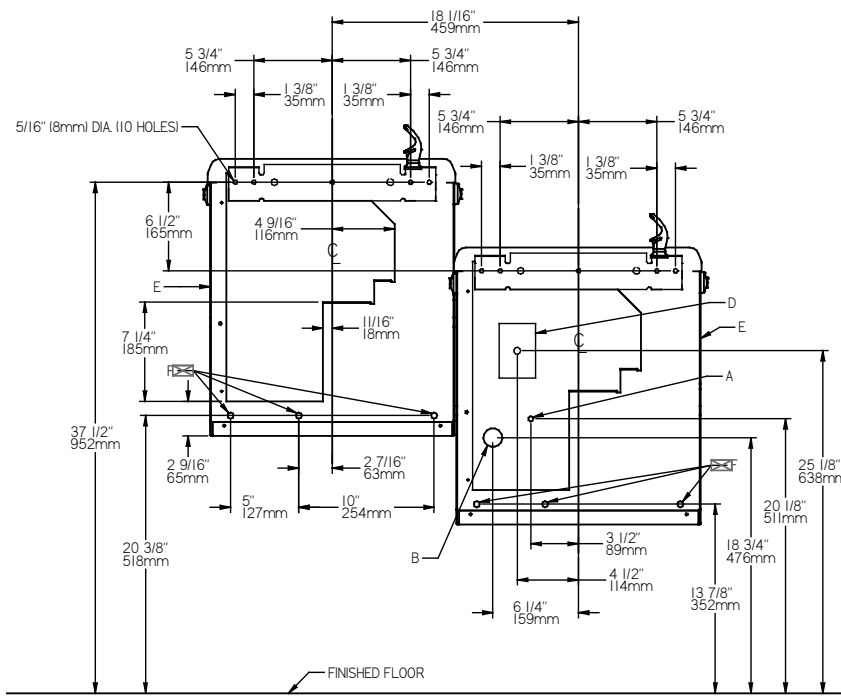
MOUNTING INSTRUCTIONS

Mount trap and install service stop to building supply line. Anchor hanger bracket securely to wall on all sides. To ensure proper engaging of waste line into trap, centerline of trap must be 4 1/8" (105mm) from wall face. Remove slip nut and gasket from trap and install on waste line tube. Hang cooler on bracket and engage waste line tube into trap inlet. Centerline height of waste outlet will vary from floor line depending on mounting height. Install 3/8" supply tube to in-line strainer. Secure bottom of cooler to wall using holes provided.

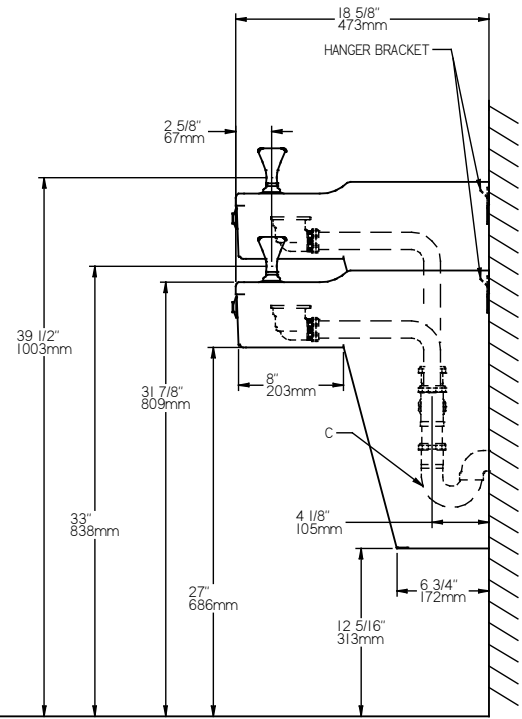
ELECTRICAL

Furnished with plug-in, 3-wire grounding type service cord. Standard 120 volt, 60 Hz, single phase. Install 120-volt receptacle, rated at 15-amp minimum, to receive 3-wire parallel blade grounding type male plug.

FRONT VIEW



SIDE VIEW



REDUCE HEIGHT BY 3" FOR INSTALLATION OF CHILDREN'S ADA COOLER

LEGEND:

- A = Recommended Water Supply Location. Shut-off valve (not furnished) to accept 3/8" O.D. unplated copper tube. Up to 3" (76mm) maximum out from wall.
 - B = Recommended Waste Outlet location. To accommodate 1-1/4" nominal drain. Drain stub 2" (51mm) out from wall.
 - C = 1-1/2" Trap (not furnished).
 - D = Electrical Supply (3) Wire Recessed Box Duplex Outlet.
 - E = Insure proper ventilation by maintaining 6" (152mm) minimum clearance from cabinet louvers to wall.
 - F = 7/16" (11mm) Bolt Holes for fastening to wall.
- **New Installations Must Use Ground Fault Circuit Interrupter (GFCI).

Job Name: _____

Model: _____ Qty. _____

Contact: _____

Approval Signature: _____

Notes: _____

Halsey Taylor[®]