

ELKAY®

SPECIFICATIONS

No Lead Two-Level Soft Sides®

Filtered Wall Mount, Barrier-Free

Drinking Fountain with EZH2O® Bottle Filling Station

Model LZWS-EDFP217K

PRODUCT SPECIFICATION

Architectural fountains with integral bottle filling station. LZWS-EDFP217K shall deliver non-chilled drinking water unless connected to a remote water chiller. Units shall be stainless steel construction with plastic ABS alcove. Sensor-activation with an auto 20-second shut-off timer. Shall include Green Ticker™ displaying count of plastic bottles saved from waste. Bottle filler shall provide 1.5 gpm flow rate with laminar flow to minimize splashing and 1.1 gpm flow rate when connected to a remote water chiller. Shall include the WaterSentry® Plus 3000-gallon capacity filter, certified to NSF/ANSI 42 and 53, with visual monitor to indicate when replacement is necessary. Shall include integrated silver ion anti-microbial protection in key areas. Unit shall meet ADA guidelines. Unit shall be lead-free design which is certified to NSF/ANSI 61 and 372 and meets Federal and State low-lead requirements. Unit shall be certified to UL399 and CAN/CSA 22.2 No. 120.

FOUNTAINS GENERAL

Fully exposed two-level fountain basins are #18 gauge, 300 series stainless steel polished to a lustrous satin finish with high shine outer edge. One fountain positioned lower on the right for wheel-chair use. The other positioned on the left at standing height.

Fountains have contoured basin that minimizes splashing. Flexi-Guard® Safety bubblers are keyed in location to prevent rotation. Fully functional, vandal-resistant front push buttons on the fountains. Flow regulator provides constant stream from 20 to 105 psi water pressure.

BOTTLE FILLER FEATURES

- No-touch, sensor-activated bottle filler.
- Auto 20-second shut-off.
- WaterSentry® Plus 3000-gallon capacity Filtration System, certified to NSF/ANSI 42 & 53 (Lead, Class 1 Particulate, Chlorine, Taste & odor).
- Integrated Silver Ion Anti-microbial Protection in key areas.
- Quick Fill Rate: 1.5 gpm.
- Laminar Flow provides minimal splash.
- Real Drain System eliminates standing water.
- Visual User Interface display includes:
 - Innovative Green Ticker™ counts bottles saved from waste.
 - LED Visual Filter Monitor shows when replacement is necessary.

OPTIONAL FEATURES (Additional Cost)

- For front access to bottle filler electricals or drain, use access panel (Item #ACCESS12X38-5)



Shown with two optional access panels installed

CAPACITIES CHART

Model	Voltage / Hertz	Chilling Capacity	F.L. Amps	Rated Watts	Approx. Ship Wt.
LZWS-EDFP217K	115V / 60Hz	–	1.0	15	120 lbs.

RATED FOR INDOOR USE ONLY



Model LZWS-EDFP217K



CONSTRUCTION

LZWS-EDFP217K two-level fountain furnished complete with Flexi-Guard® Safety bubblers, fully assembled with front push buttons on the fountains, flow regulator (20 to 105 psi), stainless steel back panel. No traps are furnished.

- Stainless Steel bottle filler construction with ABS plastic alcove.
- Furnished with wall mounting frame constructed of galvanized steel.
- Mounting can be ordered separately for pre-install.

Replacement Filters: Available as Singles and Multi-packs.

Order part numbers:

- 51300C (single)
- 51300C_3PK (three)
- 51300C_12PK (twelve)
- 51300C_24PK (twenty-four)
- 51300C_48PK (forty-eight)

Warranty: Electrical components and water system are warranted for 12 months from date of installation or 18 months from factory shipment, whichever date falls first.

CERTIFICATIONS / STANDARDS

- ADA Compliant
- UL399 and CAN/CSA 22.2 No. 120 Certified
- NSF/ANSI 42 and 53 Certified (Filter Only)
- NSF/ANSI 61 and 372 Certified
- GreenSpec Listed



This specification describes an Elkay product with design, quality and functional benefits to the user. When making a comparison of other producer's offerings, be certain these features are not overlooked.

No Lead Two-Level Soft Sides®

Filtered Wall Mount, Barrier-Free

Drinking Fountain with EZH2O® Bottle Filling Station

Model LZWS-EDFP217K

ELKAY®

ROUGH-IN DIMENSIONS

RATED FOR INDOOR USE ONLY

INSTALLER NOTE:

THIS DRINKING FOUNTAIN IS FURNISHED WITH A BUBBLER AND VALVE INCLUDING ALL CONNECTING FITTINGS WHICH ARE MANUFACTURED OF COMPLETELY LEAD FREE MATERIAL. SHUTOFF VALVE (NOT FURNISHED) TO ACCEPT 3/8" O.D. UNPLATED COPPER TUBE.

WALL OPENING

IMPORTANT: It is necessary to create a wall opening 37 1/2" W x 31 3/4" H and 25" above the floor line.

ELECTRICAL DATA

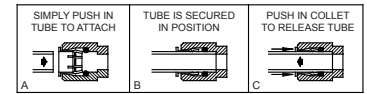
Electrical outlet, three (3) conductor grounded. Locate within safe reach of power cord.

MOUNTING INSTRUCTIONS

Refer to rough-in for location of plumbing and electrical sources. The support frame is to be installed first. Hang upper panel to hanger on frame. Fountains are to be attached to panel and wall frame. Water service lines, waste lines and electrical are assembled as required. Perform a final check for leaks and correct functions of fountains and chiller. (For details see the installation instructions.)

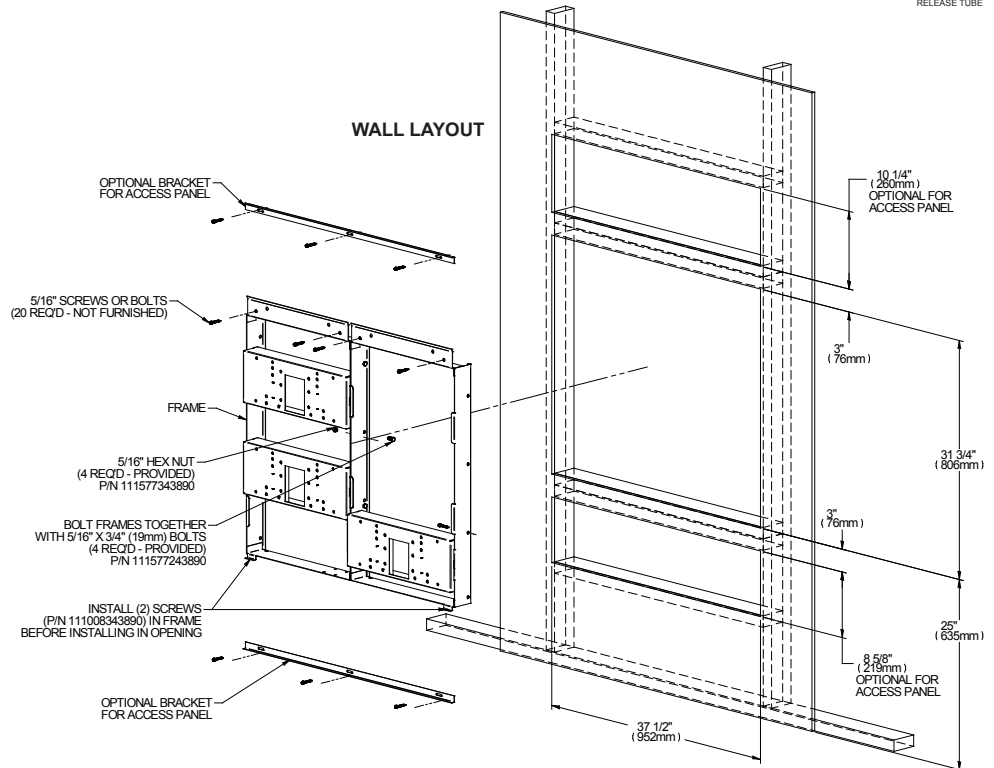
Installation requires trap to be installed in wall. Trap and service stop not included.

OPERATION OF QUICK CONNECT FITTINGS



PUSHING TUBE IN BEFORE PULLING IT OUT HELPS TO RELEASE TUBE

WALL LAYOUT



Job Name: _____
 Date: _____ Qty. _____
 Contact Info (Name, Phone, Email): _____

 Approval: _____

