

# ELKAY®

## SPECIFICATIONS

### EZH2O® Bottle Filling Station Mechanical Activation, Non-Filtered Surface Mount Model EMASMB

*Rated for Indoor Use Only*

#### PRODUCT SPECIFICATION

Surface Mount bottle filling station designed for installations without the need for electricity. Shall include battery operated Green Ticker™ displaying count of 20 oz. plastic bottles saved from waste. Bottle filler shall provide 1.0 gpm flow rate non-filtered, with laminar flow to minimize splashing. Shall include integrated silver ion antimicrobial protection in key areas. Unit shall meet ADA guidelines. Unit shall be a Lead-free design which is certified to NSF/ANSI 61 and 372 and meets Federal and State low-lead requirements.

#### STANDARD FEATURES

- Complete mechanical water activation and function. No electrical connection required.
- Quick Fill Rate of 1 gallon per minute.
- Integrated Silver Ion Anti-microbial Protection in key areas.
- Laminar Flow provides minimal splash.
- Real Drain System eliminates standing water.
- No bubbler required.
- Battery operated visual user interface display includes:
  - Innovative Green Ticker™ counts 20 oz. bottles saved from waste.
  - LCD display shows when batteries need replacing.
- Optional remote chiller can be installed within 15 feet of unit to deliver chilled drinking water.



Model EMASMB

#### CONSTRUCTION

- Stainless steel bottle filler wrapper with ABS plastic alcove.
- Includes robust hanging bracket for surface mount.

#### CAPACITIES CHART

Model	Voltage	Chilling Capacity	Approx Ship Weight
EMASMB	4.5 VDC (3 AA batteries)	N/A unless connected to chiller	22 lbs.

*The above ratings apply only to the EMASMB unit. Ratings for the chiller not included.*

#### CERTIFICATIONS / STANDARDS

- ADA Compliant
- NSF/ANSI 61 and 372 Certified



**Warranty:** Water system is warranted for 12 months from date of installation or 18 months from factory shipment, whichever date falls first.

This specification describes an Elkay product with design, quality and functional benefits to the user. When making a comparison of other producer's offerings, be certain these features are not overlooked.

**EZH2O® Bottle Filling Station**  
**Mechanical Activation, Non-Filtered**  
**Surface Mount Model EMASMB**

**ELKAY®**  
**ROUGH-IN DIMENSIONS**

**IMPORTANT!**

**INSTALLATION NOTES:**

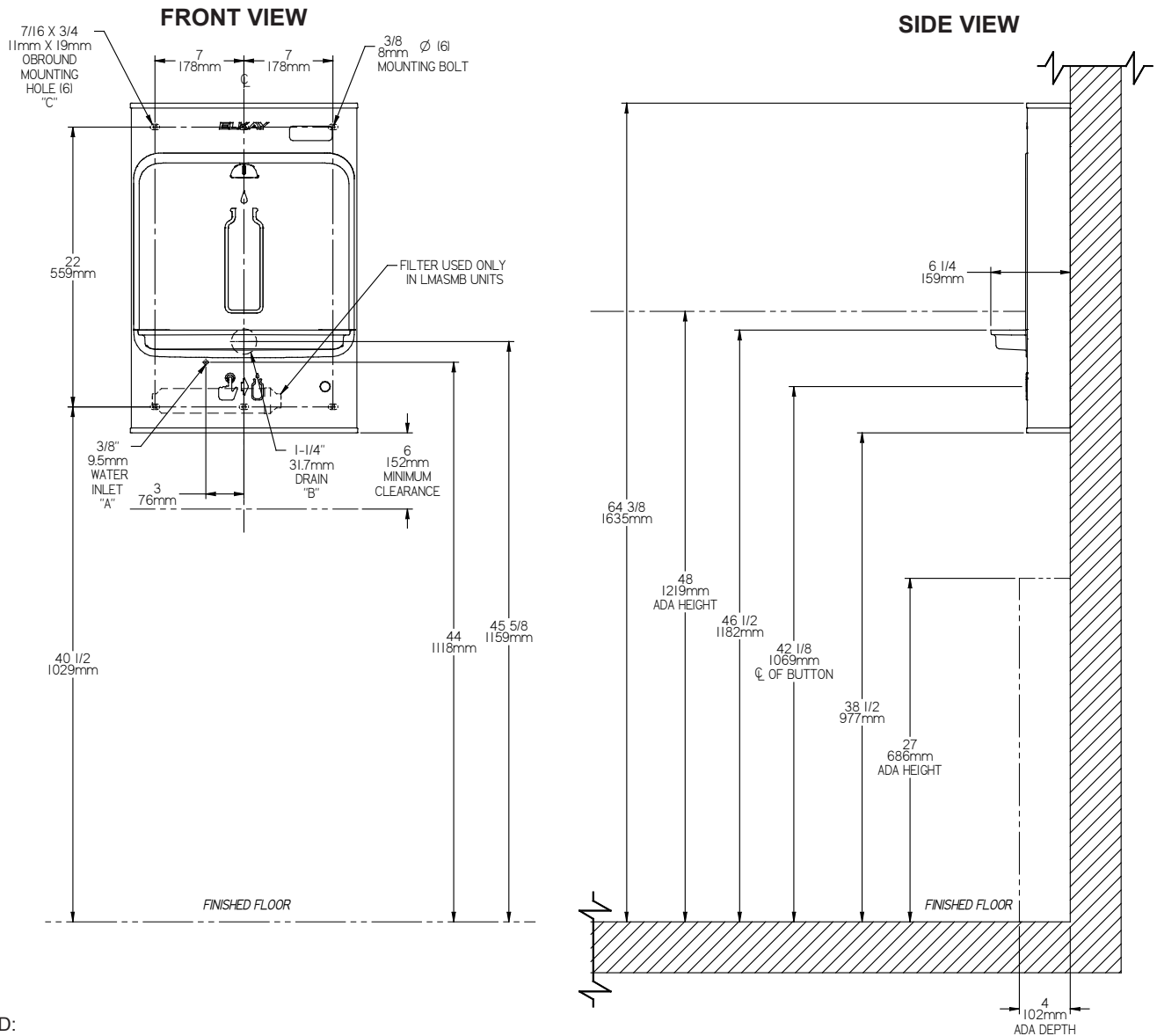
- Ensure wall is structurally sound to bear the loads imparted by the Surface Mount Bottle Filler.

**ELECTRICAL**

*Rated for Indoor Use Only*

**EZH2O equipped with (3) AA batteries for Green Ticker™ operation.**

**ADA Stand Alone Mounting**



**LEGEND:**

- A = RECOMMENDED WATER SUPPLY LOCATION;**  
 1/2" IPS MAXIMUM PIPE SIZE.  
 SERVICE STOP VALVE NOT FURNISHED.
- B = RECOMMENDED WASTE LOCATION.**  
 WASTE SHOWN IN WALL BUT MAY BE BEHIND WALL.  
 OUTLET 1-1/4" O.D. (TRAP NOT FURNISHED)
- C = 7/16" X 3/4" OBRROUND MOUNTING HOLES FOR FASTENING**  
 BACKPLATE TO WALL.

Job Name: \_\_\_\_\_  
 Model: \_\_\_\_\_ Qty. \_\_\_\_\_  
 Contact: \_\_\_\_\_  
 Approval Signature: \_\_\_\_\_  
 Notes: \_\_\_\_\_

**EZH2O<sup>®</sup> Bottle Filling Station**  
**Mechanical Activation, Non-Filtered**  
**Surface Mount Model EMASMB**

**ELKAY<sup>®</sup>**  
**ROUGH-IN DIMENSIONS**

**IMPORTANT!**

**INSTALLATION NOTES:**

- Ensure wall is structurally sound to bear the loads imparted by the Surface Mount Bottle Filler.

**ELECTRICAL**

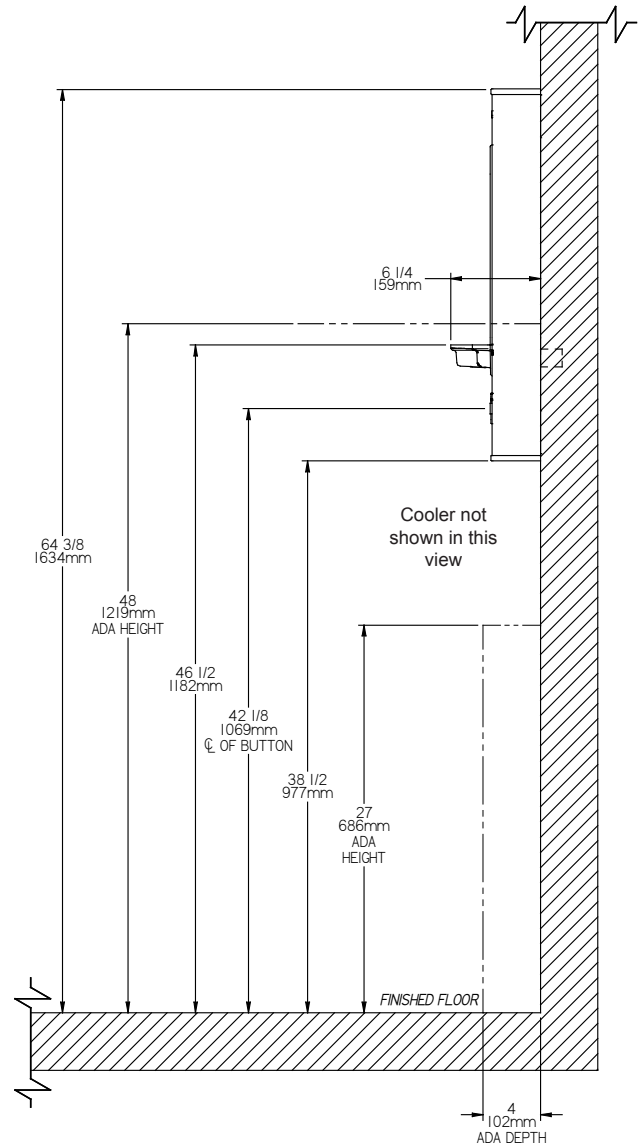
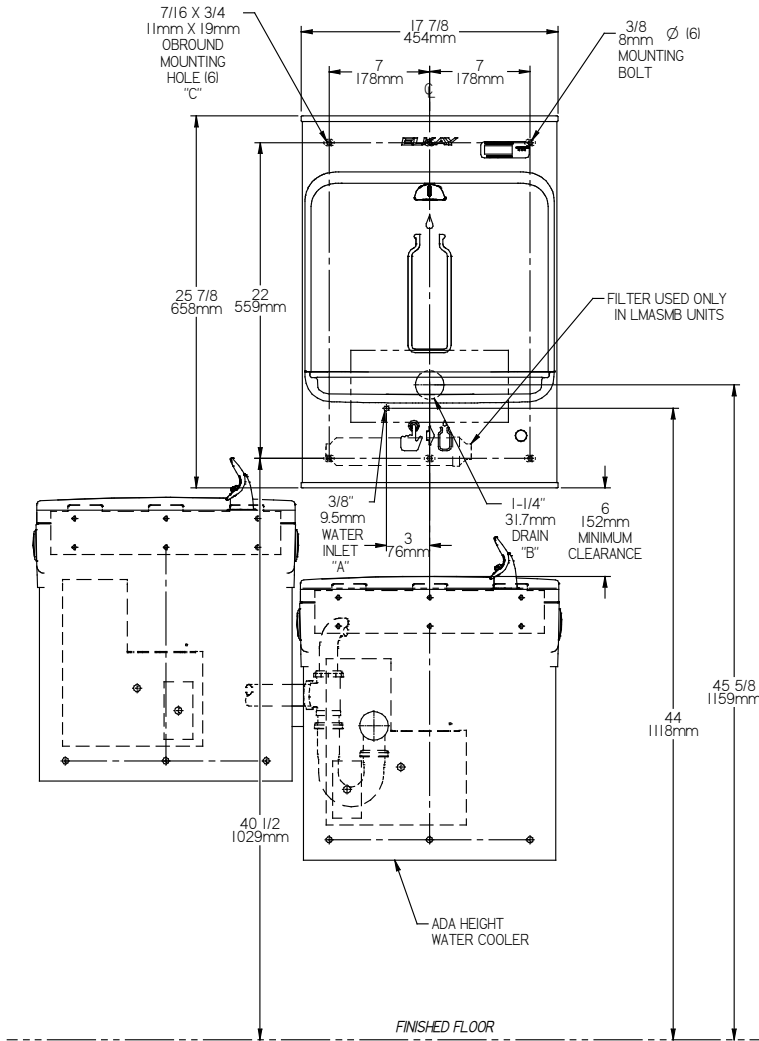
*Rated for Indoor Use Only*

**EZH2O equipped with (3) AA batteries for Green Ticker™ operation.**

**ADA Above Cooler Mounting**

**FRONT VIEW**

**SIDE VIEW**



REDUCE HEIGHT BY 3 INCHES FOR INSTALLATION ABOVE CHILDRENS ADA COOLER

**LEGEND:**

- A = RECOMMENDED WATER SUPPLY LOCATION;**  
1/2" IPS MAXIMUM PIPE SIZE.  
SERVICE STOP VALVE NOT FURNISHED.
- B = RECOMMENDED WASTE LOCATION.**  
WASTE SHOWN IN WALL BUT MAY BE BEHIND WALL.  
OUTLET 1-1/4" O.D. (TRAP NOT FURNISHED)
- C = 7/16" X 3/4" OBROUND MOUNTING HOLES FOR FASTENING**  
BACKPLATE TO WALL.

Job Name: \_\_\_\_\_  
 Model: \_\_\_\_\_ Qty. \_\_\_\_\_  
 Contact: \_\_\_\_\_  
 Approval Signature: \_\_\_\_\_  
 Notes: \_\_\_\_\_