

ELKAY[®]

SPECIFICATIONS

EZH2O[®] Bottle Filling Station

Filtered Surface Mount

Model LZWSSM

PRODUCT SPECIFICATION

Surface Mount bottle filling station designed for installations with limited wall depth. Bottle filling unit shall include an electronic sensor for touchless activation with auto 20-second shut-off timer. Shall include Green Ticker™ displaying count of plastic bottles saved from waste. Bottle filler shall provide 1.1-1.5 gpm flow rate with laminar flow to minimize splashing. Shall include the WaterSentry[®] Plus 3000-gallon capacity filter, certified to NSF/ANSI 42 and 53, with visual monitor to indicate when replacement is necessary. Shall include integrated silver ion anti-microbial protection in key areas. Unit shall meet ADA guidelines. Unit shall be lead-free design which is certified to NSF/ANSI 61 and 372 and meets Federal and State low-lead requirements. Unit shall be certified to UL399 and CAN/CSA 22.2 No. 120.

STANDARD FEATURES

- Sanitary, touchless activation with auto 20-second shut-off
- WaterSentry[®] Plus 3000-gallon capacity Filtration System, certified to NSF/ANSI 42 & 53 (Lead, Class 1 Particulate, Chlorine, Taste & Odor)
- Integrated Silver Ion Anti-microbial Protection in key areas
- Quick Fill Rate: 1.5 gpm; 1.1 gpm when connected to remote chiller
- Laminar Flow provides minimal splash
- Real Drain System eliminates standing water
- No bubbler required
- Visual User Interface display includes:
 - Innovative Green Ticker™ counts bottles saved from waste.
 - LED Visual Filter Monitor shows when replacement is necessary
- Optional remote chiller can be installed within 15 feet of unit to deliver chilled drinking water

CONSTRUCTION

- Stainless steel bottle filler wrapper with ABS plastic alcove
- Includes robust hanging bracket for surface mount

REPLACEMENT FILTERS: Available as Singles and Multi-packs.

Order part numbers:

- 51300C (single)
- 51300C_3PK (three)
- 51300C_12PK (twelve)
- 51300C_24PK (twenty-four)
- 51300C_48PK (forty-eight)

CAPACITIES CHART

Model	Voltage / Hertz	Chilling Capacity	F.L. Amps	Rated Watts	Approx Ship Wt.
LZWSSM	115V / 60Hz	N/A unless connect to chiller	1.0	15	18
LZWSSMJ0	220V / 50-60Hz	N/A unless connect to chiller	0.5	15	18

The above ratings apply only to the LZWSSM unit. Ratings for the chiller not included



Model LZWSSM

WARRANTY: Electrical components and water system are warranted for 12 months from date of installation or 18 months from factory shipment, whichever date falls first.

CERTIFICATIONS / STANDARDS

- ADA Compliant
- UL399 and CAN/CSA 22.2 No. 120 Certified (Only 115V models are certified)
- ANSI/NSF 61 and 372 Certified
- ANSI/NSF 42 and 53 Certified (Filter only)
- GreenSpec[®] Listed



This specification describes an Elkay product with design, quality and functional benefits to the user. When making a comparison of other producer's offerings, be certain these features are not overlooked.

EZH2O® Bottle Filling Station
Filtered Surface Mount
Model LZWSSM

ELKAY®
ROUGH-IN

IMPORTANT!

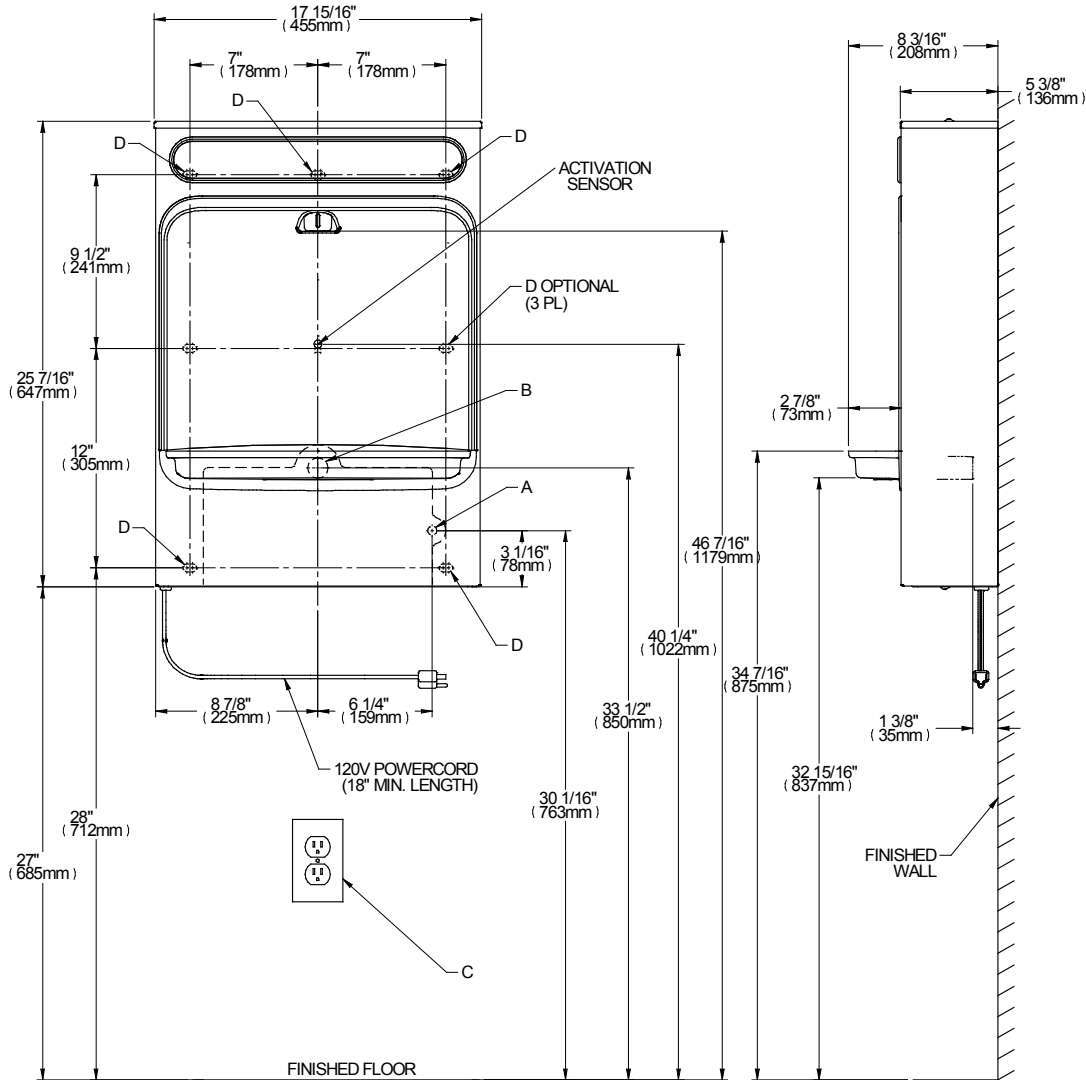
INSTALLATION NOTES:

- Ensure wall is structurally sound to bear the loads imparted by the surface mount bottle filler.

**Rated for indoor use only*

ELECTRICAL

EZH2O equipped with electrical cord and three-prong molded rubber plug for use with 15-amp minimum receptacle. Rated at 115V/60Hz, single phase.



LEGEND:

- A = RECOMMENDED WATER SUPPLY LOCATION ; 1/2" IPS MAXIMUM PIPE SIZE. SERVICE STOP VALVE NOT FURNISHED.
- B = RECOMMENDED LOCATION FOR WASTE OUTLET 1-1/4" O.D. MAXIMUM PIPE SIZE.
- C = ELECTRICAL OUTLET, THREE (3) CONDUCTOR GROUNDED. LOCATE WITHIN SAFE REACH OF POWER CORD.
- D = 7/16" X 3/4" OBOURND MOUNTING HOLES FOR FASTENING BACKPLATE TO WALL.

Job Name: _____
 Date: _____ Qty: _____
 Contact Info (Name, Phone, Email): _____

 Approval: _____