



Halsey Taylor
Satisfying Thirsts Since 1912

Filtered Vandal-Resistant HYDROBOOST®

- Models: HTHBHVR8BL
 HTHBHVRBL

GENERAL

Complete filtered water station including HydroBoost® bottle filling station and HVR water cooler.

HVR WATER COOLER

Self-contained, stainless steel, wall mount single level water cooler. Model HTHBHVR8BL delivers chilled water; HTHBHVRBL delivers ambient drinking water. Vandal-resistant, one-piece, heavy-duty bubbler with integral hood guard design to prevent tampering, airborne deposits and contamination. Automatic stream height regulator is located inside unit to prevent tampering. A constant stream height is automatically maintained under line pressures that vary from 20 to 105 psi. Includes self-closing vandal-resistant pushbutton which does not require grasping or twisting. Type 300 series stainless steel cooler top with satin finish to resist stains and corrosion. Basin includes anti-splash ridge and contoured to insure proper drainage.

HYDROBOOST® BOTTLE FILLING STATION

Stainless steel design for tamper-resistance. Pushbutton activation enhanced with embossed user graphics. Quick fill rate is 1.1 gallons per minute on chilled model and 1.5 gpm on ambient model. Laminar flow provides a clean fill with minimal splash and easy maintenance. 30-second shut-off timer for water flow. Recessed orifice to prevent cross-contamination.

LEAD REDUCTION FILTER WITH FILTER LIFE INDICATOR

Equipped with the HWF3000 WaterSentry® Plus 3000 gallon capacity filter. Quick Disconnect, 1/4 turn installation and automatic inlet shutoff valve that closes when filter is removed. High-grade filter is made with activated carbon. Complies with NSF/ANSI 41 for Aesthetic Chlorine, Class I Particulate and Taste and Odor reduction and NSF/ANSI 53 for Lead reduction.

Green, yellow and red LEDs visually indicate when filter maintenance is required. For service replacement, order as: 55898C (single), 55898C_3PK (three), 55898C_12PK (twelve) 55898C_24PK (twenty-four), or 55898C_48PK (forty-eight).

GREEN COUNTER™

Visually displays count of plastic water bottles saved from waste. (Based on 20 oz. bottles for refrigerated models.)

INLET STRAINER

Easily cleaned in-line strainer screen traps particles of 140 microns or larger before they enter the waterway.

REFRIGERATION SYSTEM (Model HTHBHVR8BL Only)

Unit provides 8GPH of 50° F drinking water at 90° F ambient air and 80° F inlet water. Hermetically sealed, positive start compressor with lifetime lubrication and built-in overload protection, efficient capillary sizing, large capacity dryer-strainer and self-lubricated fan cools copper/aluminum condenser. R-134a refrigerant. Protected by Halsey Taylor's Limited Warranty.

TEMPERATURE CONTROL

Positive sensing thermostat for controlling temperature of storage tank water. Factory set at 50° F adjustable ± 5° F.

Trap and service stop not included.

NOTE: Continued product improvement makes specification sheets subject to change without notice.

HVR Bi-Level Cooler with Bottle Filler



Rated for Indoor Use

SUGGESTED SPECIFICATION

Model HTHBHVR8BL shall deliver 8GPH of 50° F drinking water at 90° F ambient air and 80° F inlet water. Model HTHBHVRBL shall deliver non-chilled drinking water. Stainless steel construction. Shall include WaterSentry® Plus 3000 gallon capacity filter, certified to NSF/ANSI 42 and 53 with LED filter life monitor to indicate when replacement is necessary. Shall include vandal-resistant, one-piece bubbler with integral hood. Shall include vandal-resistant pushbutton activation with embossed user graphics. Shall include 30-second auto shut-off for water flow. Shall include Green Counter with tempered glass protective covering. Shall provide 1.1-1.5 gpm with laminar flow for minimal splash and recessed orifice to prevent cross-contamination. Cooler shall have stainless steel basin with anti-splash ridge and removable drain strainer. Shall comply with ADA standards, UL399, CAN/CSA 22.2 No. 120, NSF/ANSI 61 and NSF/ANSI 372.

JOB NAME: _____

 ENGINEER/CONTRACTOR NAME: _____

 APPROVAL: _____
 DATE: _____



HTHBHVR8BL and HTHBHVRBL

Filtered Bi-Level HVR Cooler with HydroBoost® Bottle Filler

(CONTINUED)

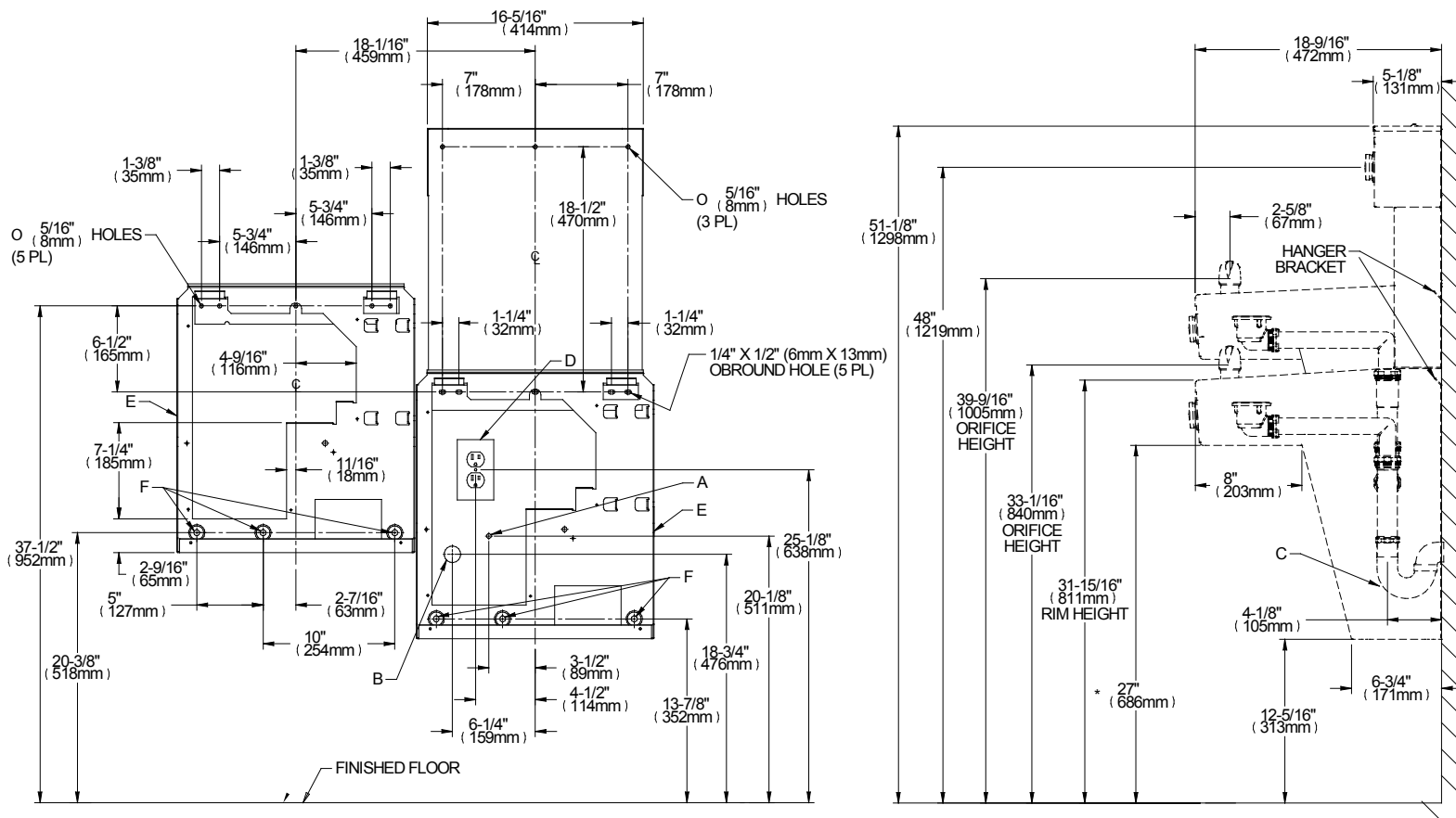
OPERATING PRESSURES

Supply water 20 – 105 psi maximum

Minimum 40 psi supply line pressure required in special circumstances when both units are in use simultaneously to ensure adequate flow.

ELECTRICAL

HydroBoost® Station equipped with plug-in, 3-wire ground type service cord. Install 120-volt receptacle, rated at 15-amp minimum, to receive 3-wire parallel blade grounding type male plug.



*** REDUCE HEIGHT BY 3" FOR INSTALLATION OF CHILDRENS ADA COOLER**

LEGEND:

- A = RECOMMENDED WATER SUPPLY LOCATION 3/8" O.D. UNPLATED COPPER TUBE CONNECT STUB 1-1/2" (38mm) OUT FROM WALL. SHUT OFF VALVE NOT FURNISHED.
- B = RECOMMENDED LOCATION FOR WASTE OUTLET 1-1/4" O.D. DRAIN.
- C = 1-1/2" TRAP NOT FURNISHED.
- D = ELECTRICAL SUPPLY (3) WIRE RECESSED BOX, DUPLEX OUTLET REQUIRED.
- E = INSURE PROPER VENTILATION BY MAINTAINING 6" (152mm) MIN. CLEARANCE FROM CABINET LOUVER TO WALL.
- F = 7/16" BOLT HOLES FOR FASTENING UNITS TO WALL.