

# ELKAY<sup>®</sup>

## SPECIFICATIONS

### Elkay EZH2O Vandal-Resistant Bottle Filling Station & Bi-Level Cooler Non-Filtered Non-Refrigerated Stainless Model VRCTLDDWSC & VRCWSX (Bottle Filler)

**RATED FOR INDOOR AND OUTDOOR USE**

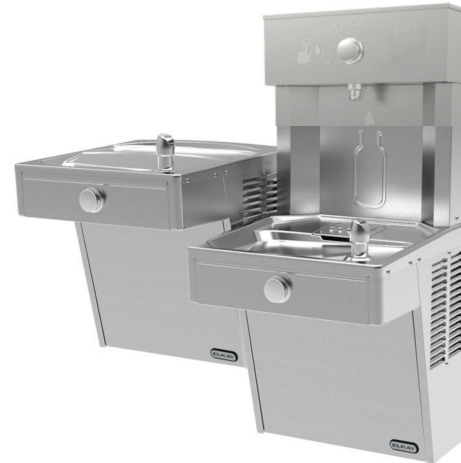
#### PRODUCT SPECIFICATION

Unit shall deliver non-chilled drinking water. Units shall be stainless steel construction and include vandal-resistant pushbutton activation. Cooler shall include vandal-resistant bubbler. Bottle filler shall provide 1.5 gpm flow rate with laminar flow to minimize splashing. Unit shall meet ADA guidelines. Unit shall be lead-free design which is certified to NSF/ANSI 61 & 372 and meets Federal and State low-lead requirements.



#### STANDARD FEATURES

- Vandal-resistant pushbutton activation
- Quick Fill Rate: 1.5 gpm
- Laminar flow provides minimal splash
- Real Drain System eliminates standing water
- Includes Vandal-resistant bubbler
- Cooler panel finish: Stainless Steel






#### CONSTRUCTION

- Stainless steel basin with integral drain
- Galvanized structural steel cooler chassis provides structural integrity
- Stainless steel construction bottle filler
- Cooler cabinet is stainless steel construction
- Vandal-resistant bubbler is one-piece, heavy-duty chrome-plated

#### WARRANTY

5 Year limited warranty on the unit's refrigeration system. Electrical components and water system are warranted for 12 months from date of installation or 18 months from factory shipment, whichever date falls first.

CAPACITIES CHART								
Models	Voltage / Hertz	Chilling Capacity**	F.L. Amps	Rated Watts	Approx. Shipping Wt. (lb)	ADA Compliant	ANSI/NSF 61 & 372 Certified	GreenSpec <sup>®</sup> Listed
VRCTLDDWSC / VRCWSX	-	-	-	-	112	•	•	•

*This specification describes an Elkay product with design, quality and functional benefits to the user. When making a comparison of other producers' offerings, be certain these features are not overlooked.*

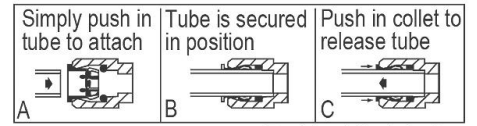
### IMPORTANT! INSTALLER PLEASE NOTE :

This water cooler has been designed and built to provide water to the user which has not been altered by materials in the cooler waterways. The grounding of electrical equipment such as telephone, computer, etc. to water lines is a common procedure. The grounding may be in the building but may also occur away from the building. This grounding can cause electrical feedback into a water cooler creating an electrolysis which creates a metallic taste or causes an increase in the metal content of the water. This condition is avoidable by installing the cooler using the proper materials as shown below.

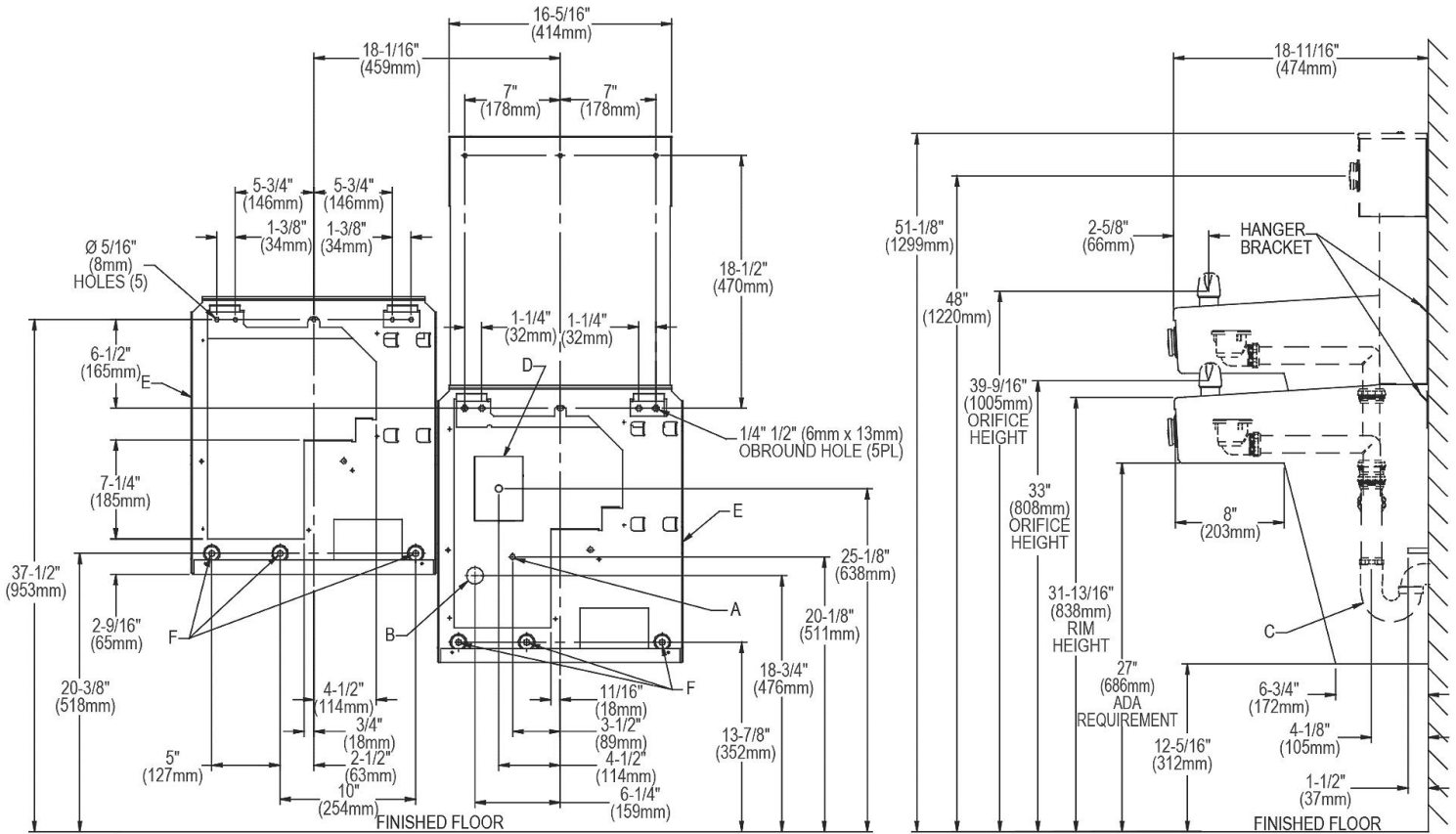
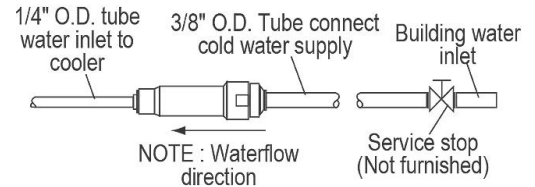
### NOTICE

This water cooler must be connected to the water supply using a dielectric coupling. The cooler is furnished with a non-metallic strainer which meets this requirement. The drain trap which is provided by the installer should also be plastic to completely isolate the cooler from the building plumbing system. Bottle filler unit on bracket attached to wall by 6 holes (as shown). Water and electrical will connect through pre-punched hole in basin. These products are designed to operate on 20 psi to 105 psi supply line pressure. Simultaneous operation of both bubblers on a bi-level unit may not be possible depending on water supply pressure. If simultaneous operation is desired, please ensure a minimum of 50 psi supply.

### OPERATION OF QUICK CONNECT FITTINGS



Pushing tube in before pulling it out helps to release tube



REDUCE HEIGHT BY 3" FOR INSTALLATION OF CHILDRENS ADA COOLER

- LEGEND**
- A = RECOMMENDED WATER SUPPLY LOCATION. SHUT OFF VALVE (NOT FURNISHED) TO ACCEPT 3/8" O.D. UNPLATED COPPER TUBE. 3" (76mm) MAXIMUM OUT FROM WALL.
  - B = RECOMMENDED LOCATION FOR WASTE OUTLET 1-1/2" O.D. DRAIN.
  - C = 1-1/2" TRAP NOT FURNISHED
  - D = ELECTRICAL SUPPLY (3) WIRE RECESSED BOX.
  - E = INSURE PROPER VENTILATION BY MAINTAINING 6" (152mm) (MIN.) CLEARANCE FROM CABINET LOUVERS TO WALL.
  - F = 7/16" BOLT HOLES FOR FASTENING UNIT TO WALL.
- \*ADA REQUIREMENT